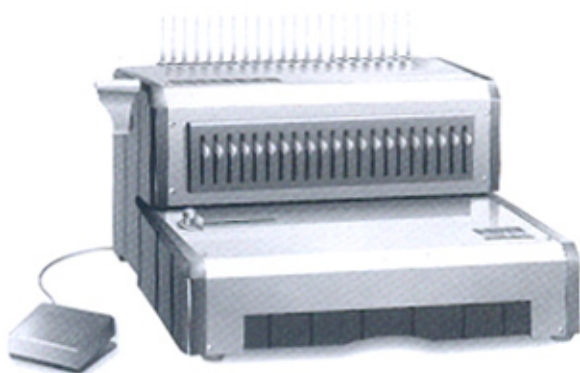


# INSTRUCTION

## Electric Plastic comb Binder D160



00783Q1160780M



LAB2003Q0153

ISO 9001:2000

Please read and save this instruction carefully.

## ● Welcome

Welcome to purchase D160. It is confident that our D160 will be a good assistance as you need bind your documents perfectly. Please read the following instruction carefully to enable you to use the machine correctly.

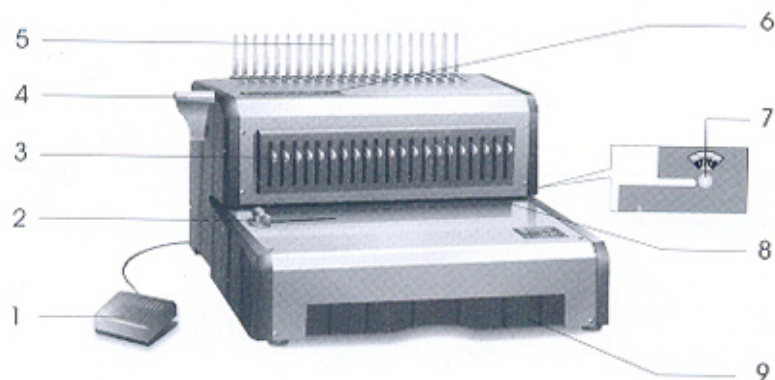
## ● CHECK

- |                       |      |
|-----------------------|------|
| 1. Main machine       | 1set |
| 2. Binding Handle     | 1pc  |
| 3. Screw (for handle) | 1pc  |
| 4. Fuse tube          | 1pc  |
| 5. Instruction        | 1pc  |

## ● FEATURES

- 1 All metal made and very durable.
- 2 Auto-punching
- 3 21pcs adjustable Push-pull pins.
- 4 Make it easy to bind documents, such as Calendar, Report, Notebooks, Albums and Booklets etc.

## ● STRUCTURE



- |                          |   |
|--------------------------|---|
| 1 Punching Switch        | 6 Comb Selection Label                  |
| 2 Paper Stop Guide       | 7 Margin Depth Adjuster                 |
| 3 Disengaged Pins        | 8 Paper Entrance                        |
| 4 Binding Handle         | 9 Wastepaper Box                        |
| 5 Comb Binding Mechanism | 10 Power Button (on back of the binder) |

## ● CAUTIONS

1. This unit made by metal structure, net weight up to 26 kgs . Please handle with care.
2. This unit is Electric use, please place it on a secure and stable work area.
3. Remove all material parts from the documents (Paper, PVC, PET), never punch the metal material in order to protect the pins.
4. Please put Power Button off after used.
5. Please read and save this instruction carefully.
6. Come to your local distributor for service after-sale, do not try to repair the unit by yourself.
7. Keep the unit away from the dampness.

## ● SPECIFICATION

Punching papers ability(70-80g)/one time:	25 sheets
Max binding capacity:	51mm (500 sheets)
Max punching holes:	21 holes (A4:297mm)
Punching hole size/ distance between holes :	8X3mm/14.25mm
Margin width:	3mm\5mm\7mm\9mm
Disengaging Pins:	21 push -pull pins
Machine Dimension:	62X42.4X23 cm
Net Weight:	17kgs
Power	220V 50HZ / 90W

## ● OPERATION

### 1 Before punching

- A Get the documents ready in order.
- B Decide the desired margin size (See Chart 1)
- C Adjust the Margin Depth Adjuster on right side of machine to the desired margin size (3mm\5mm\7mm\9mm)
- D Set the Paper Stop Guide to the appropriate paper size (See Chart 2)

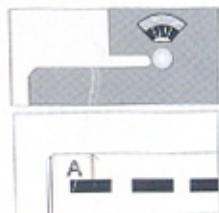


Chart 1



A4/297mm

Chart 2

- E If you are punching the other size paper, please pull out the Disengaged pins marked with the corresponding size. Make sure the last pin will not damage the documents. (See Chart 3)



Chart 3

- F Use a testing paper to check the holes and margin right or not before formal punching.

## 2 Punching

- A Place the ready document flat on base of machine aligning it against the Paper Stop Guide and sliding it horizontally into the Punching Slot.

Follow up the below Chart to set the Max punch sheets:

Document type	Paper 80g	PET Cover 0.12mm	Cardboard <2.5mm
Max punching sheets	25	8	1

- B Put on the Power Button and press the Punching Switch for punching paper.
- C Note: The pins will be moved back when punching is too difficult to strike, In this case, don't press the Power or Punching switch again. After the pins have be back, punching could be gone on.
- D When some holes don't be demanded, you can pull out the corresponding push-pull pin (See Chart 5).

Chart 5



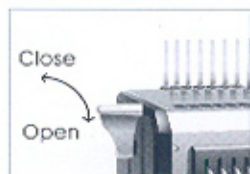
## 3 Binding

- A To bind the documents correctly, be sure to choose the correct size Plastic Comb, please check the below Chart to do so:

Diameter	5	6	8	10	11	12	14	16	19	22	25	28	32	38	45	51
Sheets 70-80g	20	25	45	70	80	100	120	140	170	200	230	260	300	370	430	500

- B Put the comb onto prongs of Binding Mechanism with opening on top; remove The Binding Handle to open the comb properly (See chart 4).

Chart 4



- C Carefully insert all the punched papers onto the comb rings and then close the comb by remove the binding handle. finally remove the bound documents and finish binding.



## ● Punching binder Series



Plastic Comb Binder \$60



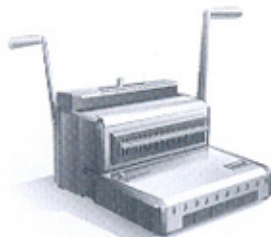
Plastic Comb Binder \$68



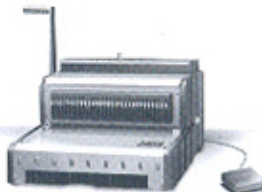
Double wire Binder \$310X



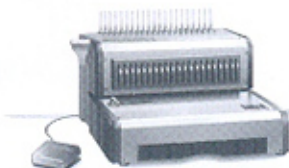
Plastic Comb Binder \$100



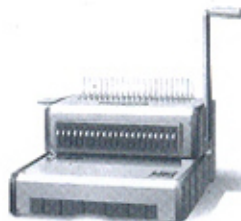
Professional Manual Double wire Binder \$310



Professional Electric Double wire Binder D310



Professional Electric Plastic comb Binder D160



Professional Manual Plastic comb Binder \$160